

DCI'S NEW REPLACEMENT Pelton & Crane® Light Spring



- New durable design saves you time & hassle
- High quality parts you can count on to make the repair once & for all!

**NEW
Innovative
Design!**

DCI

SERVICE CALL 1

LIGHT ARM IS BROKEN

OEM and other competitive offerings use plastic retaining pins for the brake block. Constant tension on the brake block results in the plastic pins shearing off.

DCI SOLUTION

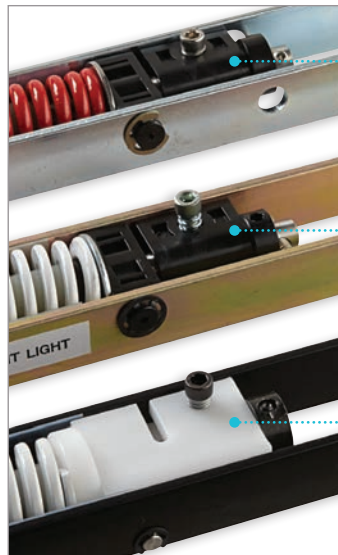
Our innovative new design features a **STAINLESS STEEL PIN** to hold the redesigned Delrin brake block.



SERVICE CALL 2

LIGHT ARM IS DRIFTING

OEM and other competitive offerings use injection-molded plastic in the brake block, which does not maintain tension over time.



Aftermarket -
injection
molded plastic

OEM -
injection
molded plastic

DCI -
durable
machined
Delrin

DCI SOLUTION

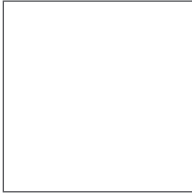
DCI designed the brake block out of machined Delrin, which acts as a natural lubricant, reducing glide force and maintaining tension over the years.

NO MORE DRIFTING LIGHT!



DCI designs products to equal or better quality standards than the original manufacturer.

Our light spring uses the same spring and pivot pin as original manufacturer.



Call us or visit our website today!

1-800-624-2793 | www.dcionline.com

NEW!

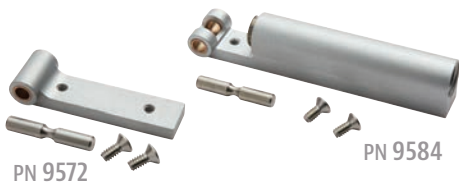
Text your questions to 503-376-8440

DCI HAS THE PARTS AND SUPPORT YOU NEED TO MAKE THIS REPAIR ONCE AND FOR ALL!



DCI'S KNUCKLE SUPPORTS ARE MACHINED INSTEAD OF CAST

They are more durable and won't break.



DCI'S LIGHT ARM REBUILD KIT

Order the convenient Light Arm Rebuild Kit that includes the spring assembly, both knuckles and pivot pin:

PN 9573 / \$360.00
Unit Mount

Includes PN 2733, PN 9584, PN 9572 & PN 9570

PN 9574 / \$360.00
Track/Ceiling Mount

Includes PN 2734, PN 9584, PN 9572 & PN 9570



TECH TIP

When replacing the LF II light spring, be proactive and replace the knuckle supports at the same time.

You've already disassembled it, so a few more minutes can **help prevent a return trip.**

Tips for an easy install

We machined two dimples on the drift screw to help align the set screw with the flats to prevent damage of the threads.



Dimples

Pin is designed to permit removal or insertion in one direction only. (Same quality pin as original manufacturer!)



The knuckle mounting screws should be torqued to 40 in-lbs.

40 in-lbs

Do you have the tools you need to make an easy install/repair? If not, order the DCI Spring Adjustment Tool, **PN 8697, \$22.00.**



PN	Description	Retail Price
LF II Light Spring Assembly		
2733	Unit Mount (P&C #9439738)	\$184.00
2734	Track/Ceiling Mount (P&C #1532907)	\$184.00
LF II Light Arm Rebuild Kit		
9573	Unit Mount Light Arm Rebuild Kit	\$360.00
9574	Track/Ceiling Mount Light Arm Rebuild Kit	\$360.00
Pelton & Crane® LF II Knuckle Supports		
9584	Pelton & Crane Rear Knuckle Support (P&C #015806)	\$104.00
9572	Pelton & Crane Front Knuckle (P&C #4191222)	\$65.00
Pelton & Crane® LF II Pivot Pin		
9570	Pelton & Crane Pivot Pin (P&C #3322604), pkg of 2	\$13.00
Pelton & Crane® Drift Screw Kit		
9571	Pelton & Crane Drift Screw Kit (P&C #006804)	\$30.00



PN 2733



PN 9584



PN 9572



PN 9570



PN 9571